



# AQUASCUD LINE

## PRODUCT DESCRIPTION

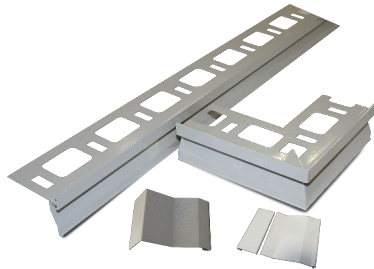
AQUASCUD LINE is a draining gutter profile in painted aluminium to finish and protect the edge of terraces and balconies, to promote the correct outflow of water.

It is particularly suitable to be combined with AQUASCUD System and PLASTIVO and is fitted with special pieces such as the AQUASCUD CORNER corners and the AQUASCUD FIXY joints.

It is available in various colours and in the following versions:

AQUASCUD H.10 LINE in case of tiled floors, it is fitted with a double gutter and tile covering edge;

AQUASCUD H.0 LINE if there is no tiling or if there are very thin coatings.



## PRODUCT APPLICATION

On the risers of terraces, balconies and roofing structures in general, as a finish along the edge of the surface.

## ADVANTAGES

- Easy to join with quick-coupling joints
- For the correct outflow of water on sloped surfaces
- Specifically designed for connection with waterproofing products to protect screeds
- In the H.10 version it helps the draining away of any residual water and damp in the under-tile layer
- For the correct alignment of ceramic tiles along the perimeter of terraces and balconies
- Practical and rapid application
- Excellent quality for money in comparison to normal stone or ceramic gutters

## PREPARATION AND APPLICATION Preparing the surfaces

It is advisable to create a seat for the profile lowered by approximately 3 mm through shaping the surface during the casting phases or later on by milling.

Clean the surface from any dust, form oil and any loose parts.

Check the conditions of the edge of the screed and, using spot patches, repair the surface with SPIDY 15 rapid-setting mortar; for generally uneven edges use FLEXOMIX 30 mortar (see relative data sheets).

### Application

Pre-cut the AQUASCUD LINE profile leaving a space of approximately 5 mm between the various elements.

In the H.10 version, tape the inner surface of the profile along the outflow holes to prevent it from clogging during the waterproofing phases. In the H.0 version, tape the edge of the profile to create a straight connection with the waterproofing compound.

Apply profile and corners by placing the perforated anchoring fin along the edge of the screed on a bed of AQUASCUD or PLASTIVO (see the relative technical data sheets) waterproofing compound, and then temporarily secure with steel nails.

Cover the connection between the various elements with AQUASCUD FIXY quick-coupling joints.

Once the first layer of mixture for profile installation has finished curing, remove the nails and proceed with waterproofing the screed, taking care to overlap the AQUASCUD BASIC, FLEXONET or XNET membrane (see the relative technical data sheets) by at least 7 cm over the profile anchoring fin.

In the H.10 version lay the paving maintaining a space between tile and edge of the profile of



# AQUASCUD LINE

approximately 5 mm, which must be sealed with elastic grouting material by inserting backer rod.



References available at [www.volteco.com](http://www.volteco.com)

## PACKAGING AND STORAGE

AQUASCUD LINE comes in tubes containing 5 bars measuring 2.70 m each, for a total of 13.50 m/package.  
AQUASCUD CORNER 90°/AQUASCUD CORNER 270°/ FIXY are supplied in single packages (1 piece each).

## WARNINGS - IMPORTANT NOTES

Do not use AQUASCUD LINE for side-walks and structures with walk-on edges.  
The profile must be cleaned with normal household products.  
If the profile needs to be cut, before fastening it, limit any burrs to facilitate positioning and for safety reasons.

## PHYSICAL AND TECHNICAL SPECIFICATIONS

Specification	Values
Composition	Aluminium
Thickness	1.50 mm
Paint	With UV-resistant polyester powders
Fastening holes	2.5 mm diameter
Outflow holes for H.10 version	every 10 cm - length 10 mm - width 4 mm

## SAFETY

Refer to the related Safety Data Sheet.

## COPYRIGHT

© Copyright Volteco S.p.A. - All rights reserved.  
Information, images and text found in this document are exclusive property of Volteco S.p.A.  
They may change anytime without prior notice.  
Updated versions of this and other documentation (specification, brochure, other) are on [www.volteco.com](http://www.volteco.com).  
In case of translation text may contain technical and linguistic inaccuracies.

## LEGAL NOTES

Note for buyer/installer:  
This document prepared by Volteco S.p.A. is provided as an aid and guideline for the buyer/installer.  
This does not take into consideration the details of each single operational context, for which Volteco S.p.A. will not be held liable.  
This does not change and does not extend the obligations of Volteco S.p.A.  
It may vary and the installer is therefore required to update his/her information prior to each application by referring to [www.volteco.com](http://www.volteco.com).  
The above clarifications extend to the pre-post-sales technical/commercial information of the commercial network.

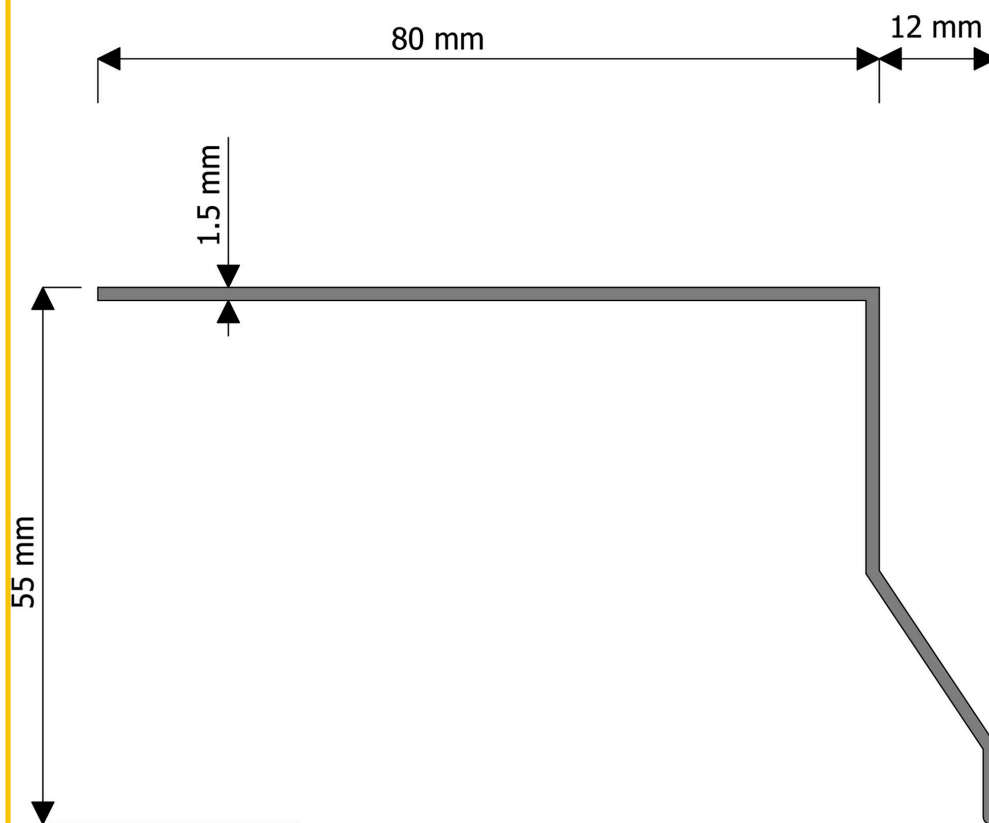
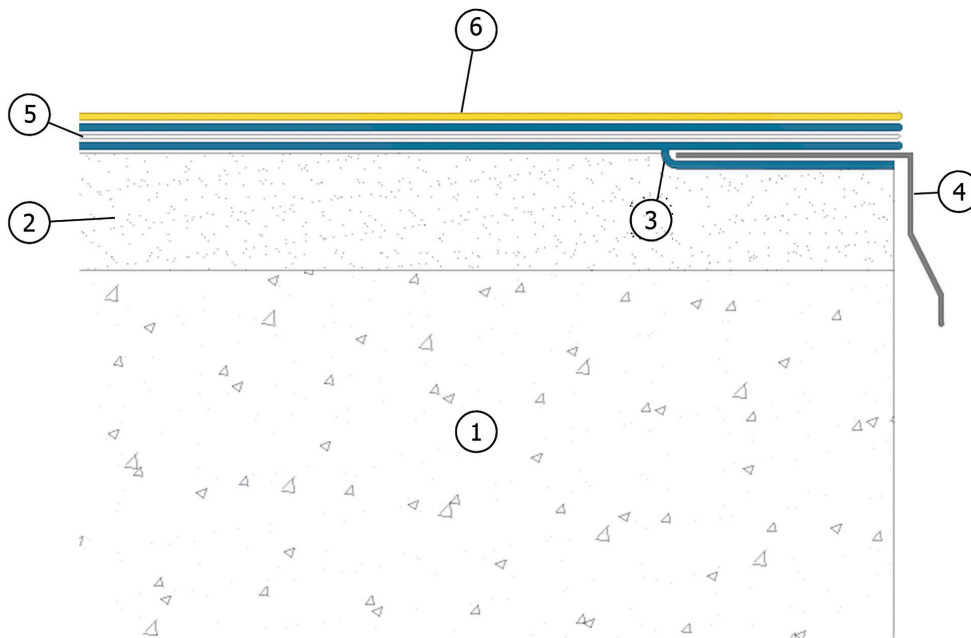
## ANNEXES



# AQUASCUD LINE

## H.0

- |   |                    |
|---|--------------------|
| 1. Solaio in c.a.   | 5. AQUASCUD SYSTEM |
| 2. Massetto pendenzato con ribassamento tramite fresatura | 6. AQUASCUD REFLEX |
| 3. PLASTIVO o AQUASCUD SYSTEM - strato di fissaggio       |                    |
| 4. AQUASCUD H.0 LINE                                      |                    |





# AQUASCUD LINE

## H.10

1. Solaio in c.a./R.C. slab
2. Massetto pendenzato con ribassamento tramite fresatura/  
Sloped concrete screed with lowering by milling
3. AQUASCUD SYSTEM 420 - strato di fissaggio/Fixing layer
4. AQUASCUD H.10 LINE
5. AQUASCUD SYSTEM 420
6. Elemento separatore deformabile drenante/  
Deformable draining separating element
7. Sigillante elastico a basso modulo/  
Low elastic modulus sealant
8. Rivestimento ceramico applicato con adesivi di tipo C2,  
deformabilità S1 e S2/Ceramic floor tiles laid with C2-type  
adhesive (preferably with an S1 and S2 deformation class)

